

MightyMount XR™

Strongarm Healthcare's MightyMount keyboard and monitor wall arm defines a category of its own and stands apart from common "computer store grade" keyboard and display arm mountings. MightyMount's dual-axis pivot points and vertical articulation allow the monitor and keyboard to be quickly and easily repositioned to achieve optimal ergonomics for each user. Simplified functionality makes MightyMount favored among hospital and point-of-care users. The robust, die-cast aluminum construction makes it a superb choice for any healthcare environment.

Features

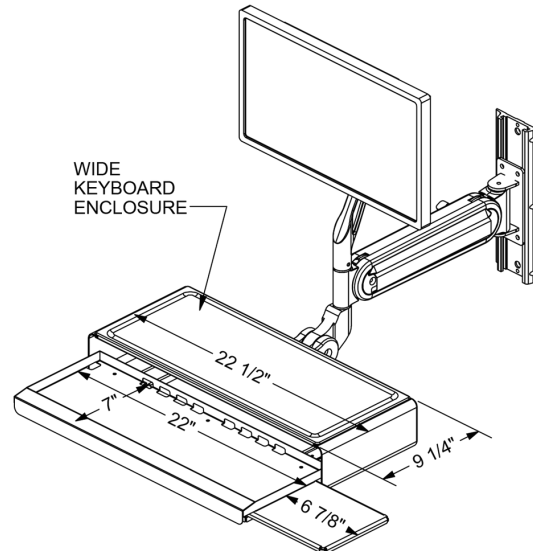
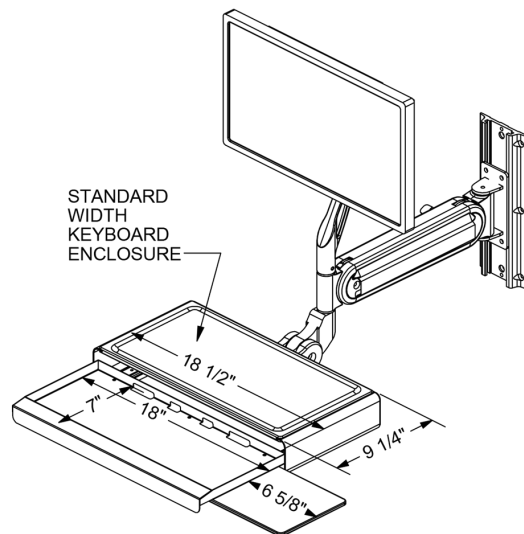
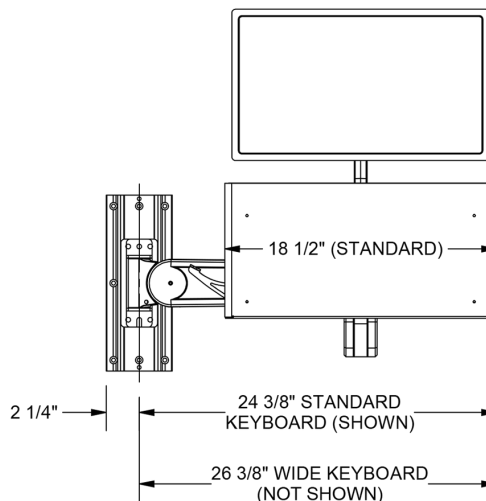
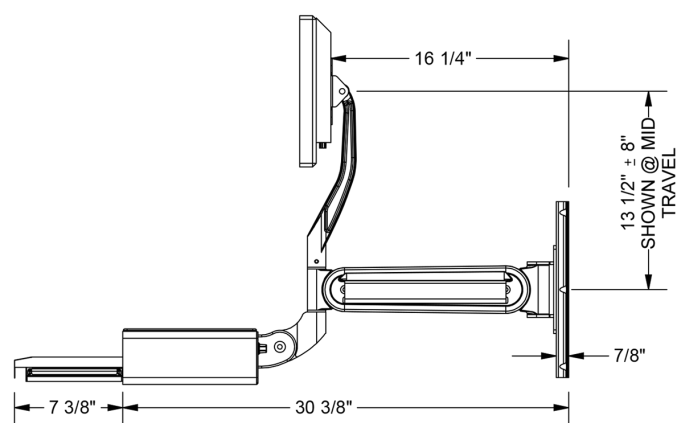
- Integrated cable management
- Repositions effortlessly with 100% counter-balanced adjustability
- 16" of vertical articulation
- Remains level throughout vertical and horizontal movement
- Secure mechanical lock-in-place feature
- A variety of keyboard enclosures, trays, and work surfaces available
- All trays and work surfaces include a USB powered USB 3.0 hub (powered USB hub optional)
- Dual-axis pivot action
- Tilting display mount with standard VESA bracket
- 6.25" of independent vertical monitor adjustment with optional vertically adjustable VESA display mount
- Robust cast aluminum construction, anti-microbial powder-coated finish (stock and custom color options)
- Fully extends 37.75" horizontally from mounting point, up to 55.75" with optional horizontal extension
- Folds to 7" depth for convenient stowaway
- Mounting tracks available from 12" to 72"
- Optional PatientView™ feature provides the ability to pivot the display and keyboard independently
- Limited Lifetime Warranty



strongarmhealthcare.com
sales@strongarmhealthcare.com
(215) 443-3400

Strongarm, Inc.
425 Caredean Drive
Horsham, PA 19044

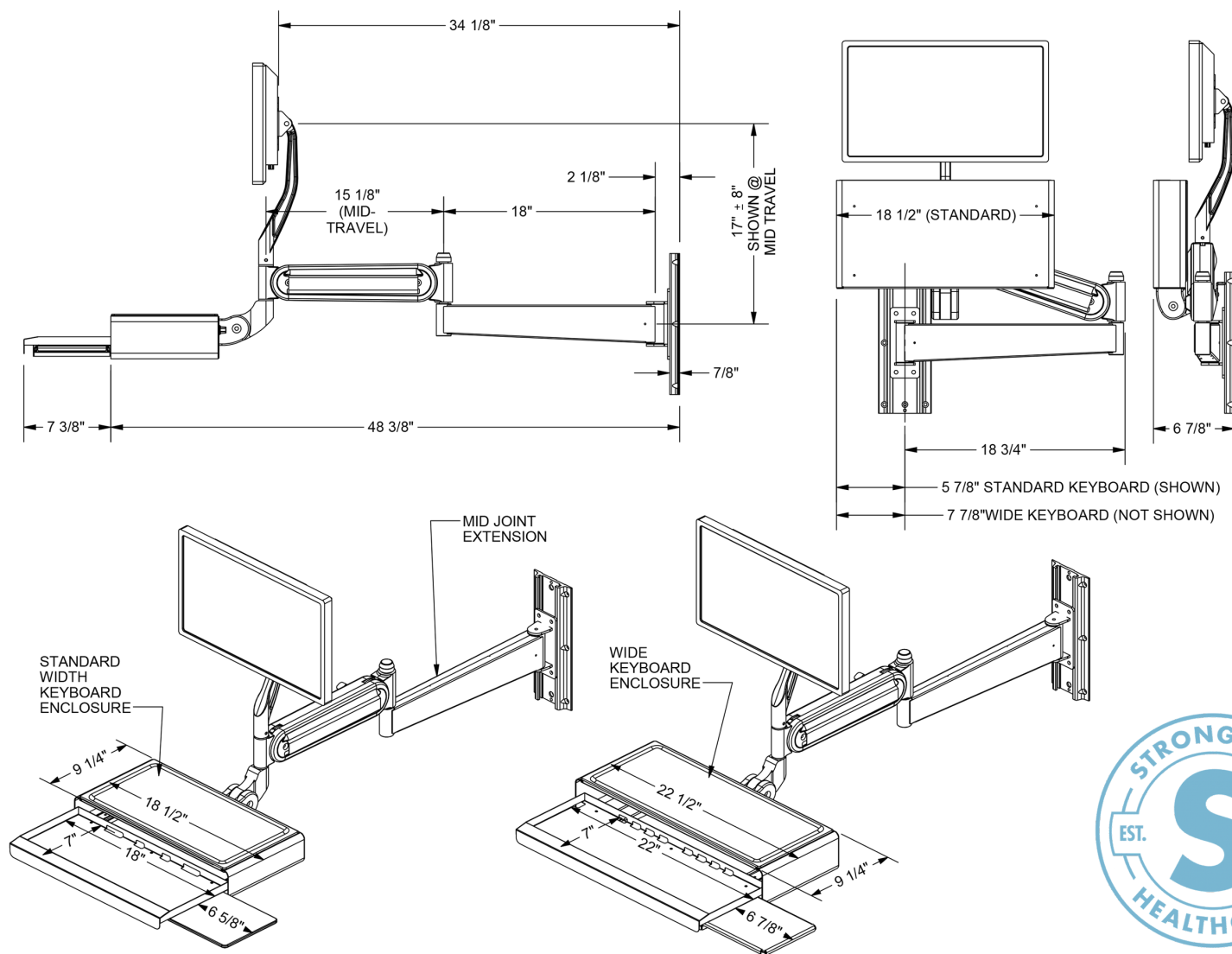
MightyMount XR™ Base Configurations and Dimensions



strongarmhealthcare.com

All dimensions are in inches and are assumed center and symmetrical, unless noted otherwise. This drawing is the sole property of Strongarm Designs, Inc. This drawing contains proprietary information which shall not be used for manufacture for others.

MightyMount XR™ Base Configurations and Dimensions (with optional horizontal extension)



strongarmhealthcare.com

All dimensions are in inches and are assumed center and symmetrical, unless noted otherwise. This drawing is the sole property of Strongarm Designs, Inc. This drawing contains proprietary information which shall not be used for manufacture for others.

MightyMount XR™ Specifications

DOC# SAHC_MMXR_SPEC REV02

Adjustability

Vertical Travel: 16"

Swivel at display end: 340°

Swivel at mounting end: 180°

Display Tilt: Forward tilt: 15°, Backward tilt: 45°

Vertical Positioning

Counterbalanced vertical adjustability

Display and keyboard maintain level when repositioned

Materials of Construction

Body: 319F cast aluminum alloy

Keyboard Tray: 5052 aluminum alloy

Cable Management

Integrated internal/external cable covers

Bearings

Horizontal Axles: Precision ground ball bearings

Vertical Axles: Acetal bushings

Mounting Styles

Track mount (wall mount and surface mount options available)

Finish

2-part catalyzed polyurethane antimicrobial powder coat
(stock and custom colors available)

Approvals and Certifications

UL, CE, U.S. GSA Advantage, OSHPD



See **MightyMount™** in action at:
strongarmhealthcare.com/mightymount

