

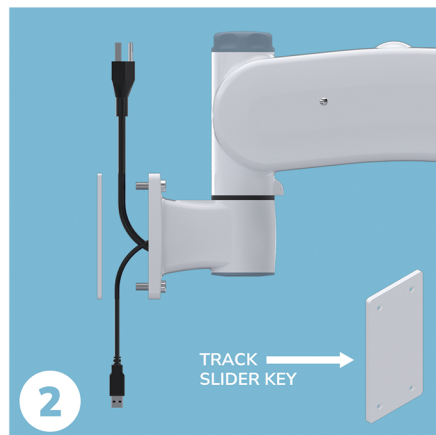
CleanMount™ Installation & Setup Guide

(After installation, see reverse side for the Ergonomics & Operating Guide)

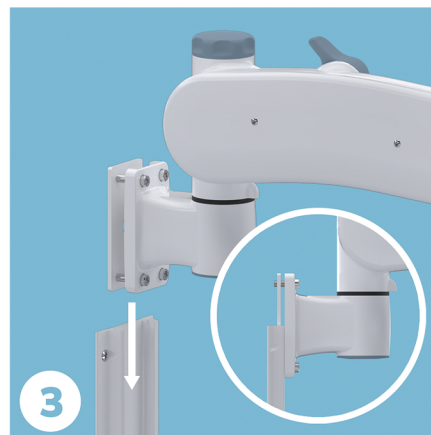
STRONGARM®
+healthcare



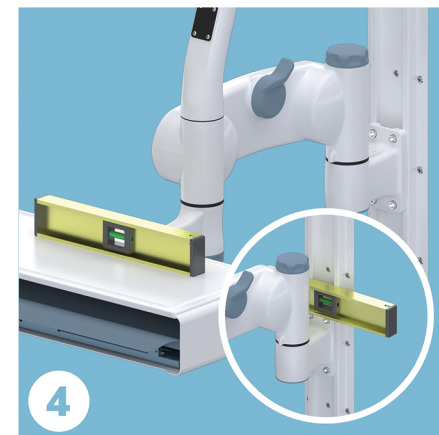
1 Install the mounting track in accordance with the instructions included with your track. Use a level to ensure track is plumb.



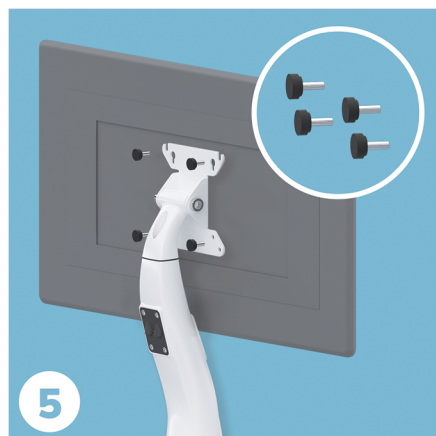
2 Route cables up or down between the track slider key and the CleanMount mounting bracket and loosely tighten the slider key bolts.



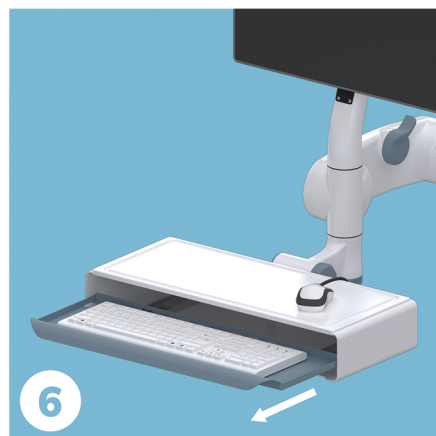
3 Insert the slider key into the mounting track to your preferred mounting height and hand tighten the four slider key bolts. (cables not shown for clarity)



4 Ensure that the slider key and keyboard enclosure are level and fully tighten the four slider key bolts using the supplied 1/4" hex key.



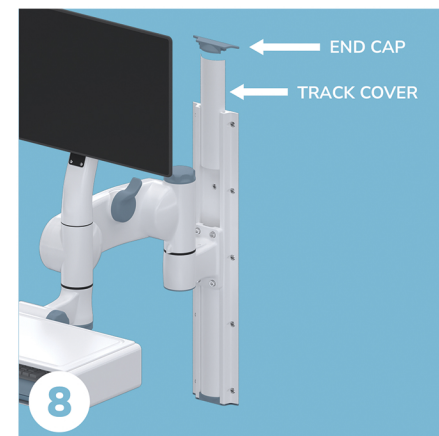
5 Attach your display to the display mount using the supplied M4x8 or M4x12 screws.



6 Slide open the keyboard tray. Place your keyboard into the tray. Your mouse cable can be routed through the hole located on the rear of the keyboard enclosure.



7 To access the USB hub, rotate the cover latch and slide the work surface cover forward. Connect your keyboard and mouse cables to the USB hub. Excess cable can be stowed in the tray area adjacent to the USB hub.

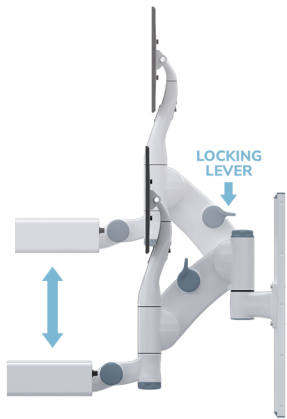


8 Trim the track cover (supplied with your mounting track) to the desired lengths and slide the track cover into the corresponding slots on the mounting track. Insert the top and bottom track end caps.

CleanMount™ Ergonomics & Operating Guide



(See reverse side for the Installation & Setup Guide)



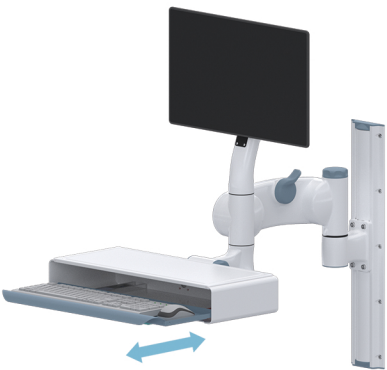
Vertical Positioning & Adjustment
Rotate locking lever to adjust



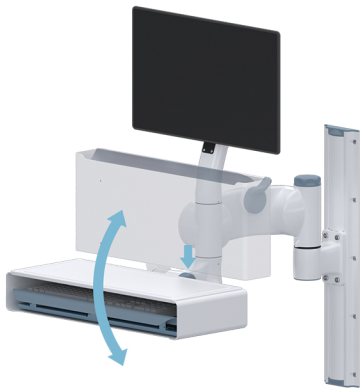
Left/Right Swivel
Loosen/tighten blue knob to adjust



Keyboard Enclosure & Display Swivel
Loosen/tighten blue knob to adjust



Slide-out Keyboard Tray



Keyboard Enclosure Fold Up/Down
Loosen/tighten blue knob behind enclosure to adjust



PatientView Display Swivel*
*On PatientView equipped models

Specifications

| | | |
|------------------------------|---|---|
| Adjustability | Vertical Travel | 16" |
| | Swivel at Display End | 340° |
| | Swivel at Mounting End | 180° |
| | Display Tilt | Forward tilt: 15° Backward tilt: 45° |
| Vertical Positioning | Counterbalanced vertical adjustability | |
| | Display and keyboard maintain level when repositioned | |
| Materials of Construction | Body | 356 cast aluminum alloy |
| | Keyboard Tray | 5052 aluminum alloy |
| Cable Management | Removable cover, cables are factory preinstalled | |
| Bearings | Horizontal Axles | Precision ground ball bearings |
| | Vertical Axles | Acetal bushings |
| Mounting Styles | Track mount, wall mount, or surface mount options available. | |
| Finish | 2-part catalyzed polyurethane antimicrobial powder coat and custom colors available | |
| Approvals and Certifications | UL, CE, U.S. GSA Advantage, HCAI | |