

STRONGARM healthcare

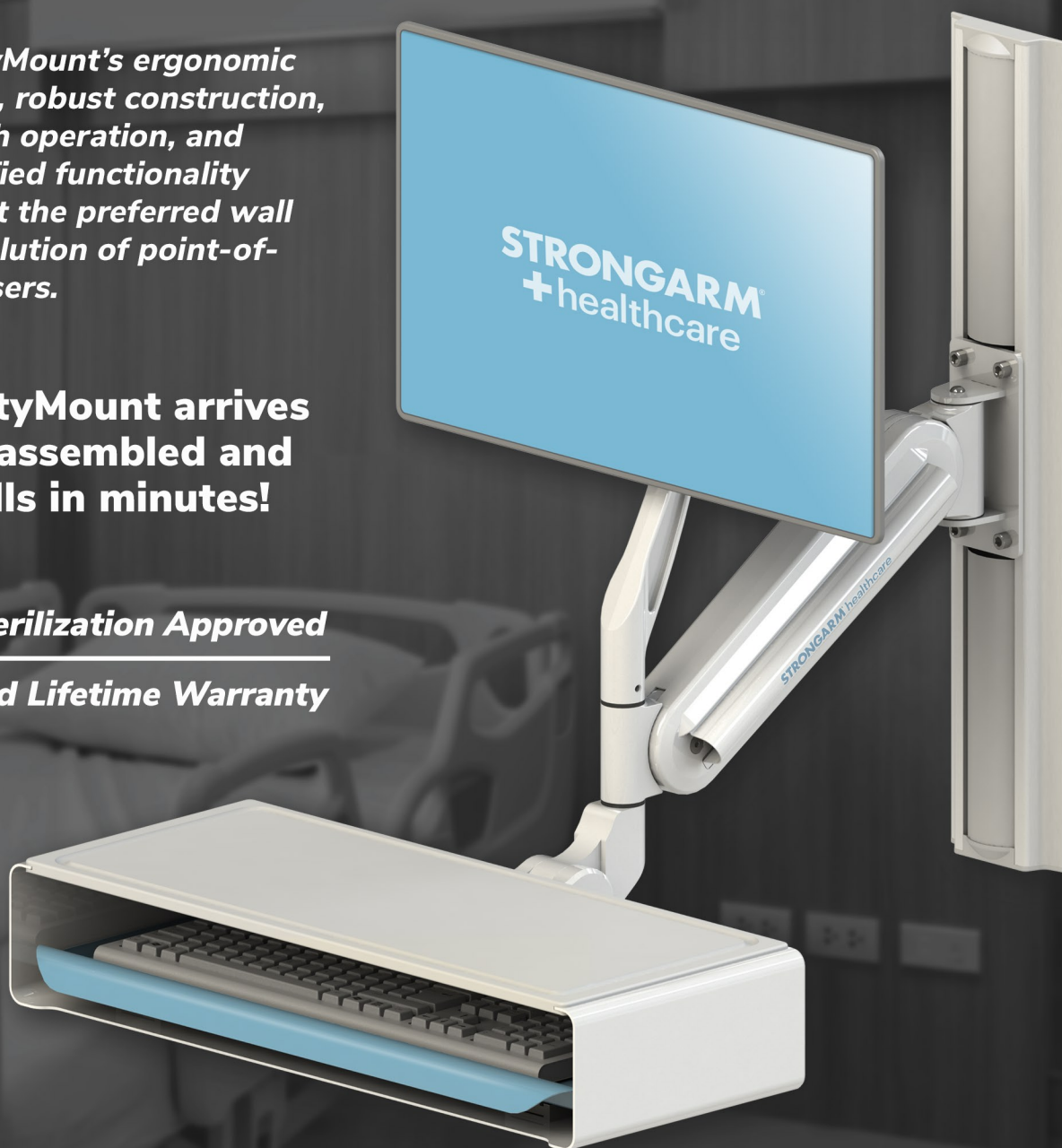
MightyMount™

MightyMount's ergonomic design, robust construction, smooth operation, and simplified functionality make it the preferred wall arm solution of point-of-care users.

MightyMount arrives fully assembled and installs in minutes!

UV Sterilization Approved

Limited Lifetime Warranty



- **Antimicrobial Finish**
- **Ergonomic Design**
- **Durable Construction**

- **Industrial Grade**
- **Customizable Options**
- **Easy to Install**

MightyMount's ergonomic design with dual-axis pivot points and smooth, counter-balanced vertical articulation allow the keyboard and display to be quickly and easily repositioned to achieve optimal comfort for each user. Featuring an antimicrobial, ultra-cleanable, and hygienic finish, our MightyMount wall arm systems can be customized to suit your specific point-of-care application and requirements. Industrial-grade, die-cast aluminum construction makes MightyMount a superb choice for any healthcare environment.

Key Features

- Antimicrobial powder coated finish
- UV sterilization approved
- Robust die-cast aluminum construction
- Integrated cable management
- Repositions effortlessly with 100% counter-balanced adjustability
- 12" of vertical articulation, 16" with MightyMount XR
- Dual-axis pivot action
- Remains level during vertical and horizontal movement
- Ergonomic lock-in-place lever
- Tilting display mount with standard VESA bracket
- Includes integrated USB 3.0 hub
- Fully extends 37.75" horizontally from mounting point, up to 55.75" with the optional horizontal extension*
- Folds to 7" depth for convenient stowaway
- Mounting tracks available from 12" to 72"

*with MightyMount XR

MightyMount ships fully assembled and installs in minutes!



MightyMount is proudly built in the U.S.A.

The optional PatientView™ feature permits the display to be rotated towards the patient independently of the keyboard during patient/medical practitioner consultation.



MightyMount™

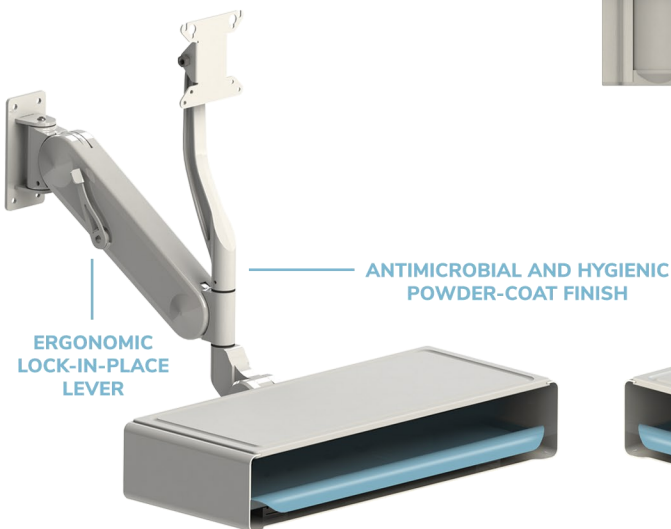
The first industrial-grade wall arm for healthcare



MightyMount folds and stows neatly to just 7" depth



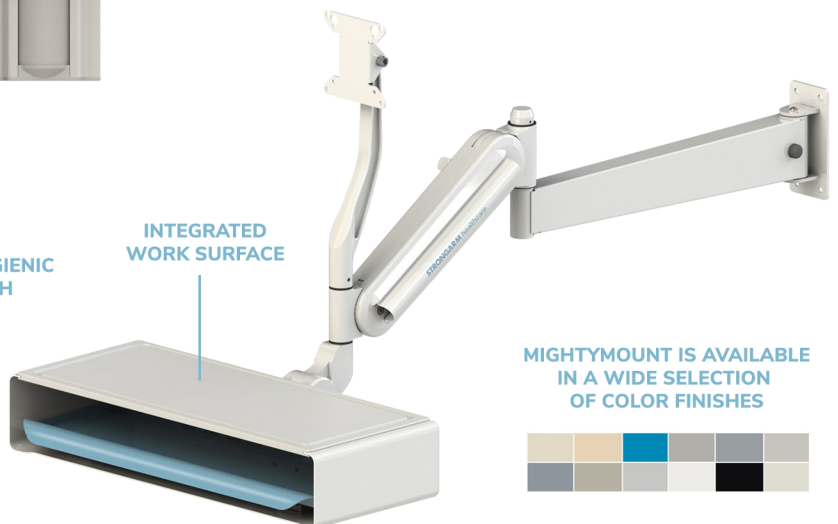
Optional track mounted PC holders and enclosures



ERGONOMIC
LOCK-IN-PLACE
LEVER

ANTIMICROBIAL AND HYGIENIC
POWDER-COAT FINISH

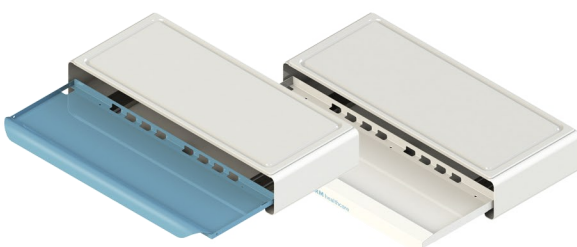
INTEGRATED
WORK SURFACE



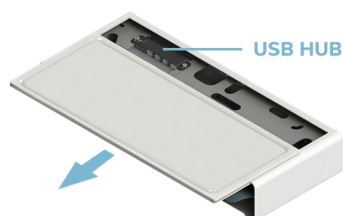
MIGHTYMOUNT IS AVAILABLE
IN A WIDE SELECTION
OF COLOR FINISHES



Strongarm Healthcare offers a wide selection of optional MightyMount accessories including PC holders and enclosures, horizontal arm extensions, dual display mounts, brackets and holders for bar code scanners, RFID scanners, card readers, and webcams, plus a variety of keyboard enclosures and trays.



TWO STYLES OF KEYBOARD ENCLOSURES
AVAILABLE IN 18" or 22" WIDTH



SLIDING WORK SURFACE PROVIDES EASY
ACCESS TO THE INTEGRATED USB HUB



OPEN KEYBOARD TRAY
WITH MOUSE PAD

MightyMount™ Specifications

MightyMount is proudly built in the U.S.A.

Adjustability

Vertical travel

16" (MightyMount XR), 12" (MightyMount)

Maximum extension from wall

37.75" (MightyMount XR)*

34.75" (MightyMount)*

*Optional 18" extension available

Swivel

At display end: 340°

At mounting end: 180°

Display tilt

Forward tilt: 15°

Backward tilt: 45°

Construction

Body

Die-cast aluminum alloy

Keyboard enclosure and tray

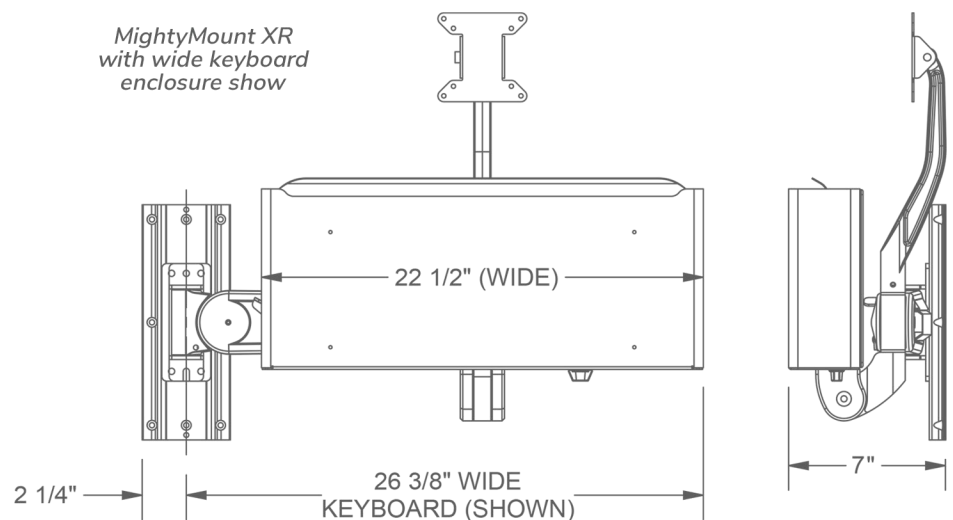
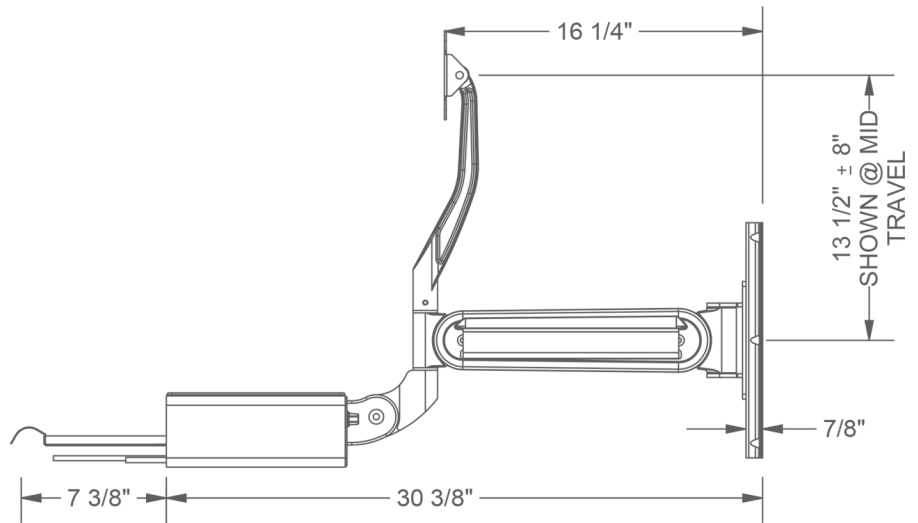
Aluminum alloy

Finish

Two-part antimicrobial catalyzed
polyurethane powder coat

Approvals and Certifications

UL, CE, U.S. GSA Advantage, OSHPD



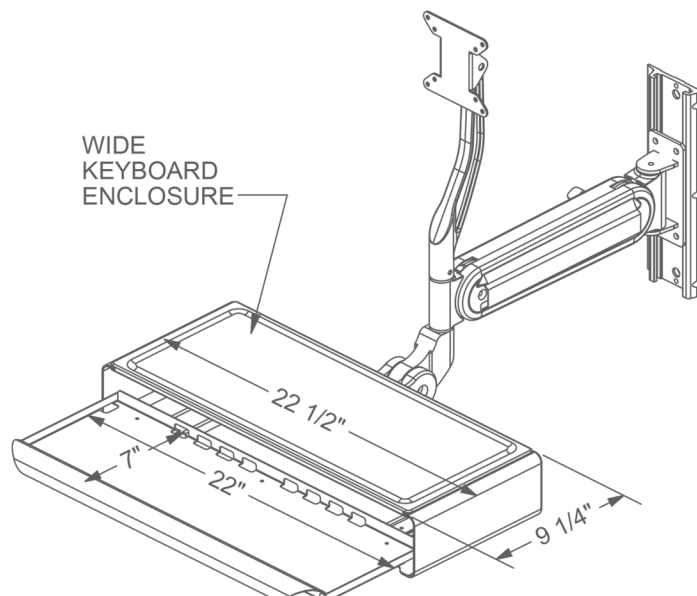
Strongarm Healthcare

425 Caredean Drive
Horsham, PA 19044

Toll-free: (800) 778-7901

Phone: (215) 443-3400

Fax: (215) 443-3002



DOWNLOAD
MIGHTYMOUNT XR
SPEC SHEET



DOWNLOAD
MIGHTYMOUNT
SPEC SHEET



DOWNLOAD
MIGHTYMOUNT
INSTALL GUIDE

